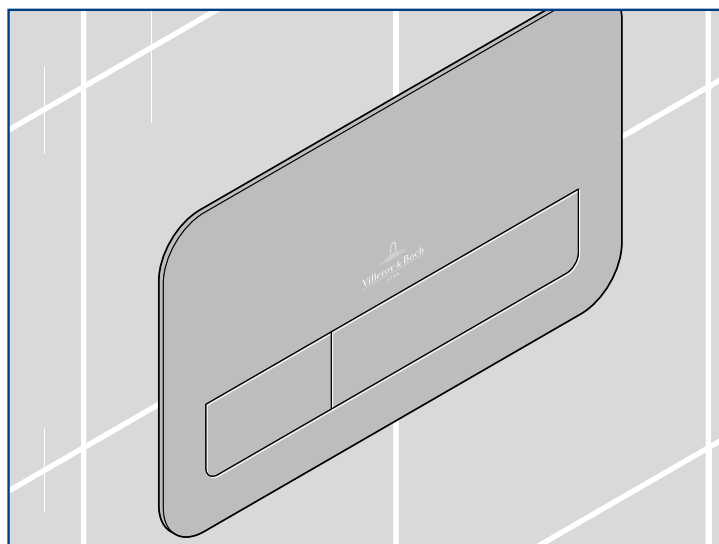


Montageanleitung



Betätigungsplatte

L200

EN	Installation instructions	Actuating plate
FR	Instructions de montage	Plaque de commande
ES	Instrucciones de montaje	Pulsador
IT	Istruzioni per il montaggio	Piastra di azionamento
NL	Montagehandleiding	Bedieningsplaat
RU	Инструкция по монтажу	Кнопка смыва

Safety



Warning!

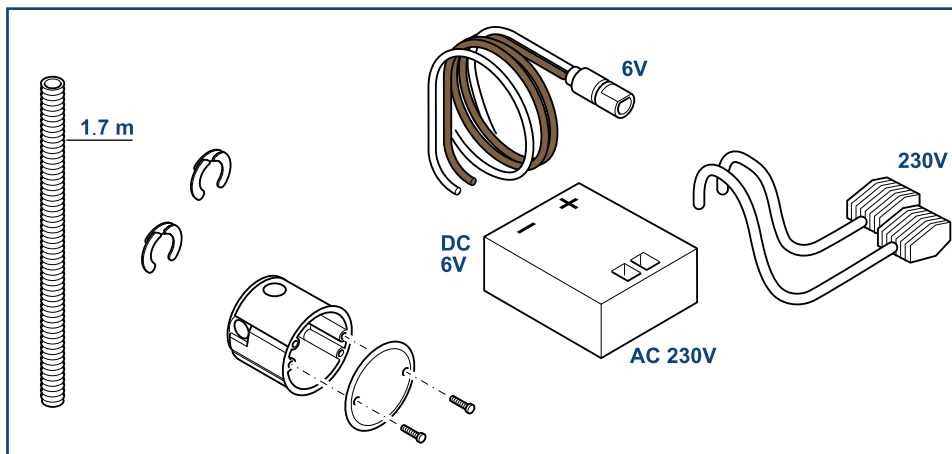
Electrocution from touching live components!

Severe injury and even death can be the consequences.

- The mains connection must be made exclusively by electricians.
- When carrying out work, make sure that the power lead is disconnected from the mains and secured against reconnection.
- Do not insert or pull out the mains plug with wet hands.

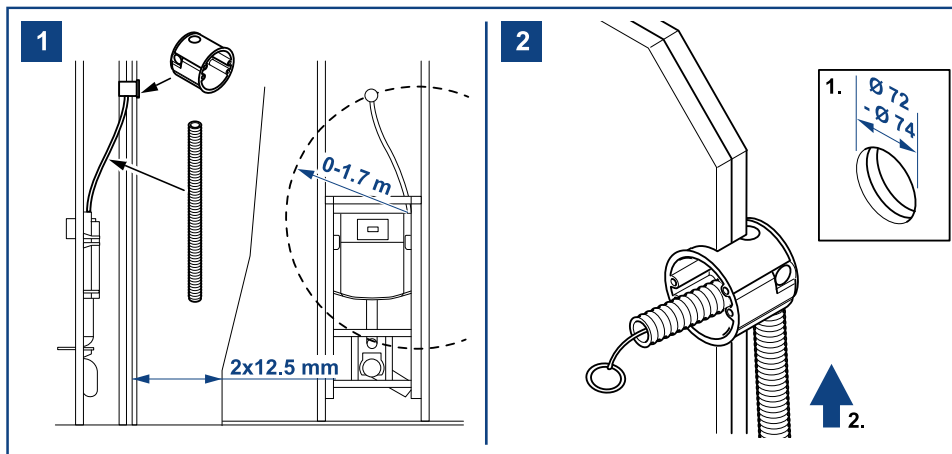
All work on the electrical connections must only be carried out by an electrician in accordance with the electro-technical regulations.

Installation



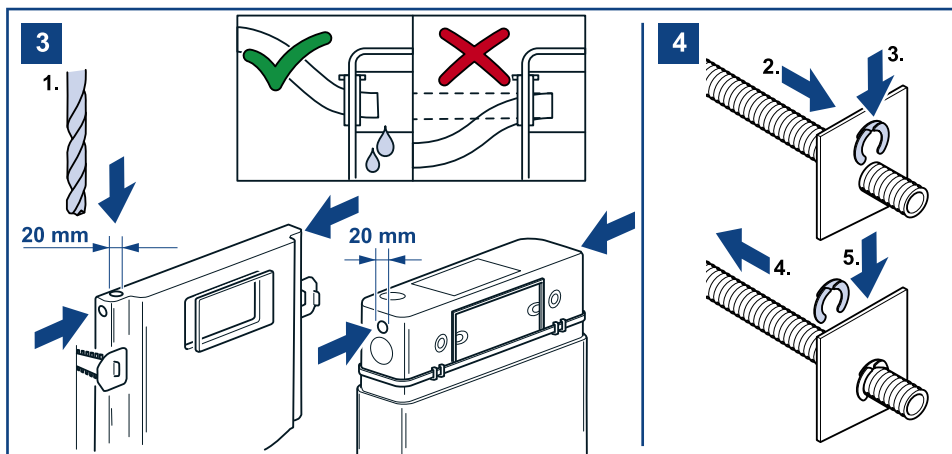
1. Determination of the installation location for the flush-mounting socket.

- Our recommendation, above the flushing tank, see Illustration 1.

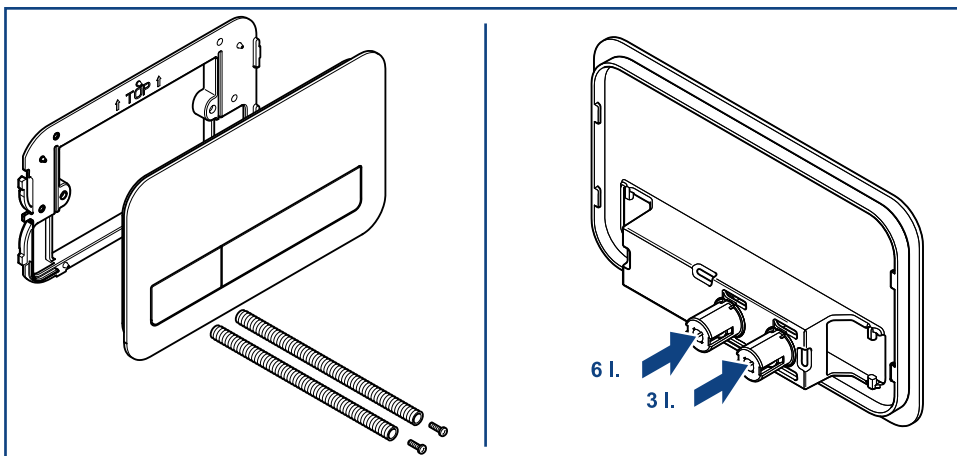


2. Installing the flush-mounting socket.

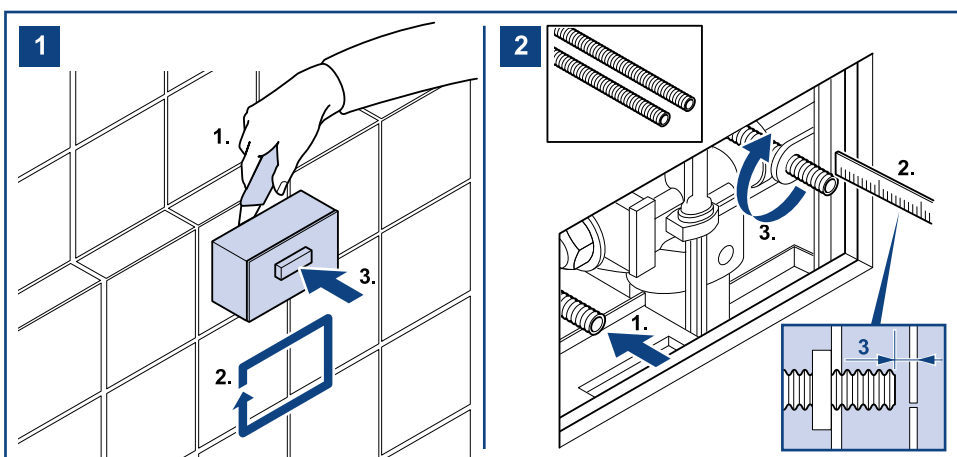
3. Route the included empty tube from the flush-mounting socket to the flushing tank, see Illustration 2.



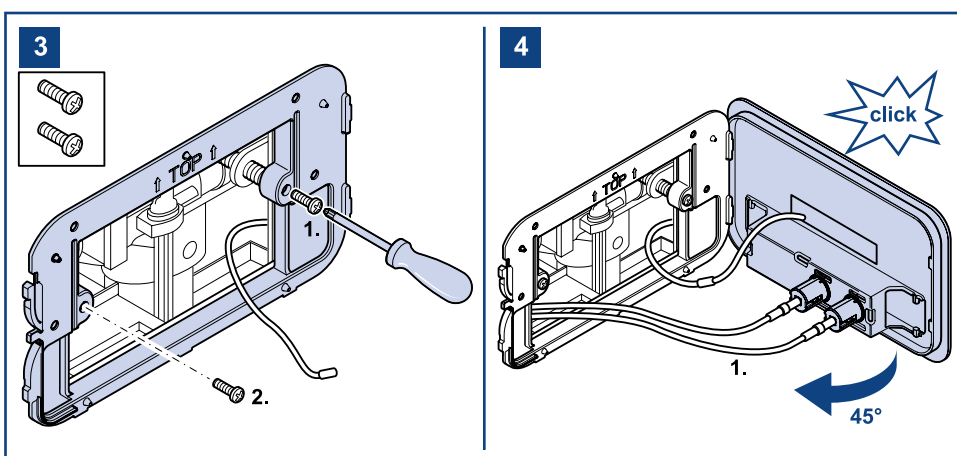
Mount the push plate



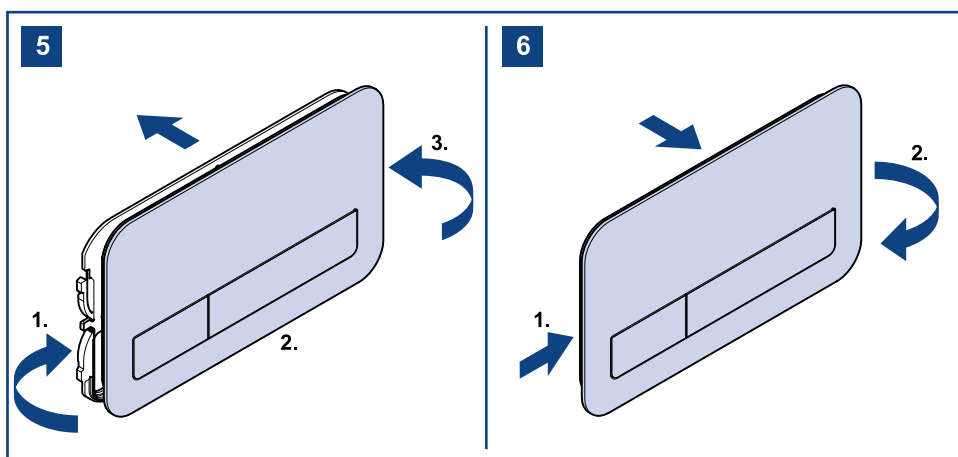
1. Screw the carrier plate in place.



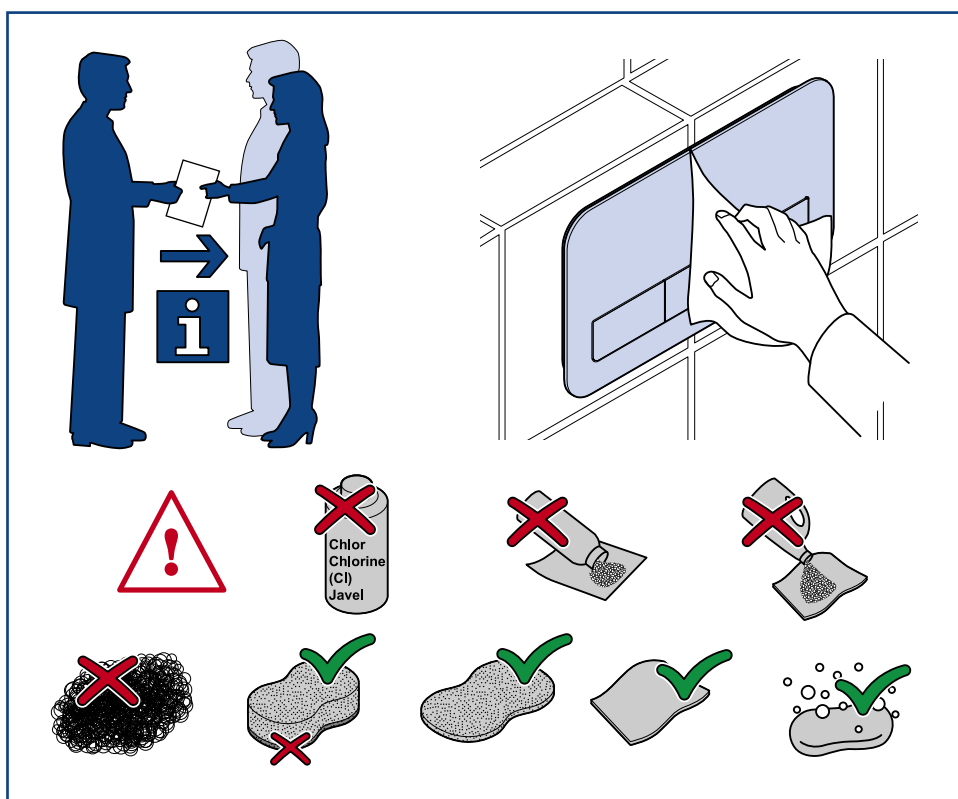
2. Connect the plug to the socket, see Illustrations 3 and 4.



3. Install push plate, see Illustration 5.



Cleaning



CE

EAC